



XXXXXXXXXXXXXXXXXXXX

THEOMNIVOLT

XXXXXXXXXXXX



Commodity Trading

PALM OIL



Incoterms
2020 by the International Chamber of Commerce (ICC)



24/7



XXXXXXXXXXXX



"THEOMNIVOLT" Where Power Meets The Potential



Our Trajectory

VISION

To emerge as a distinguished leader in the marine, mining and commodity sector by consistently exceeding expectations and upholding our commitments.

MISSION

Enriching the future by facilitating sustained and efficient distribution of marine, mining and commodity products and services, making a lasting impact.

SOCIAL RESPONSIBILITY

- ◆ Prioritizing safe, clean, and healthy environments.
- ◆ Complying with environmental regulations.
- ◆ Contributing positively to society and sustainability.

STRATEGIC APPROACH

- ◆ Strategically procure and ensure services / supplies for clients.
- ◆ Diversify supply routes to mitigate single-source risks.
- ◆ Utilize facilities for income generation.
- ◆ Maintain uninterrupted supply to the market.
- ◆ Foster global and regional partnerships in the industry.



TEAMWORK

- ◆ Respectful communication and collaboration are our foundations.
- ◆ We value individual contributions within a cohesive team.
- ◆ Embracing diverse perspectives to drive innovation.
- ◆ A culture anchored in integrity, respect, and teamwork.

COMMERCIAL EXCELLENCE

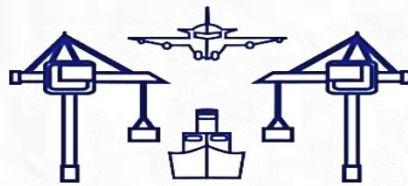
- ◆ Fostering a profit-driven, efficient business mindset.
- ◆ Implementing best practices for optimal performance.

TRUSTED PARTNER

- ◆ Building strong relationships with stakeholders.
- ◆ Promoting collaboration and mutual trust.
- ◆ Aligning with governments, partners, customers, and communities.



INCOTERM 2020



INCOTERMS

SELLER

FIRST CARRIER

ALONGSIDE SHIP

PORT

PORT

ALONGSIDE SHIP

FINAL CARRIER

PLACE

BUYER

EXW	EX WORKS	AGREED PLACE							
FCA	FREE CARRIER	AGREED PLACE							
FAS	FREE ALONGSIDE SHIP	PORT OF LOADING							
FOB	FREE ON BOARD		PORT OF LOADING						
CFR	COST & FREIGHT			PORT OF DESTINATION					
CIF	COST, INSURANCE AND FREIGHT			PORT OF DESTINATION					
CPT		COST PAID TO					PLACE OF DESTINATION		
CIP		CARRIER & INSURANCE PAID TO					PLACE OF DESTINATION		
DPU	DELIVERED AT PLACE UNLOADED				DELIVERED AT PLACE		PLACE OF DESTINATION		
DAP	DELIVERED AT PLACE						DESTINATION		
DDP	DELIVERED DUTY PAID						DESTINATION		

SELLER'S OBLIGATION

TRANSFER OF RISK
BUYER'S OBLIGATION





Palm Oil

Palm oil is in nearly everything – it's in close to 50% of the packaged products we find in supermarkets, everything from pizza, doughnuts and chocolate, to deodorant, shampoo, toothpaste and lipstick. It's also used in animal feed and as a biofuel in many parts of the world



Palm Oil RBD CP 6 / 8 / 10

Palm oil is semi-solid at room temperature (20°C). The liquid portion could be physically separated from the solid portion of palm oil by fractionation.

- Free Fatty Acid : 0.1 % Max
- Cloud Point (deg C) : 10.0 Max

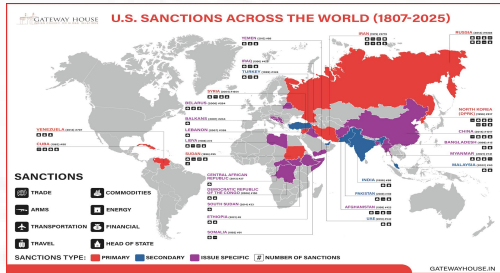
Quality Standards

As per International Acceptance of Gas / Oil / Fuel, we strictly follow International Standards of ASTM - American Society for Testing and Materials / ENISO - European Union International Organization for Standardization.



Cargo Origin

Considering the current war situation, the Origin of the Cargo and the Vessel's Flag which will carry the Cargo will be from a Non-Sanctioned Country due to Restrictions imposed for Sanctioned Countries by USA / UN OFAC Department..



IBC Tank Export

An IBC tank, or Intermediate Bulk Container, is a multipurpose, has exhibiting strength and hardwearing piece of industrial storage equipment designed to safely hold large quantities of liquids and semi-liquids.



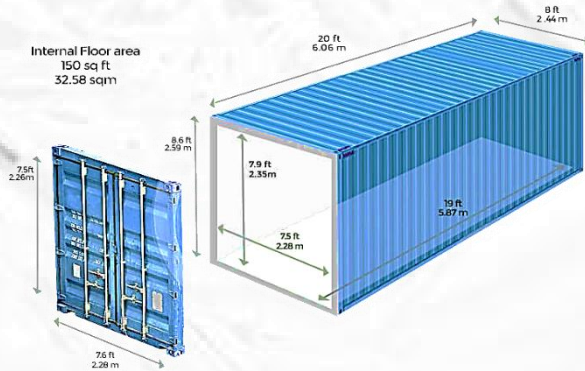
Flexi Bag Export

To make it Cost Effective (+/- 21 TON, RBD Palm Olein, Anti Oxidant (E319, E320) is Exported through Flexi Tanks which are Flexible Tank Containers that offer Secure Storage and Shipment of Liquid Cargo in Bulk.



Packaging & Specification

Certified – Roundtable on Sustainable Palm Oil (RSPO) | Certified – HALAL
 Certified – Hazard Analysis Critical Control Point (HACCP)



PACKING SIZE	LOADING CAPACITY (20')	NET WEIGHT (TON)
IBC Tank	+/- 14.40 Ton	+/- 14.40
Flexi-Bag / Tank	+/- 21 Ton	+/- 21
12 x 1 Liter	1,798 Cartons	19.418
4 x 5 Liters	4,408 Jerry Cans	19.836
1 x 18 Liters	1450 Jerry Cans	23.490
1 x 18 Liters Tin	1,438 Tins	23.290
1 x 20 Liters	1,330 Jerry Cans	23.724
1 x 25 Liters	1,098 Jerry Cans	24.705



Specification CP 10 Anti Oxidant (E319:E320)

PACKING SIZE	LOADING CAPACITY (20')	NET WEIGHT (TON)
IBC Tank	+/- 14.40 Ton	+/- 14.40
Flexi-Bag / Tank	+/- 21 Ton	+/- 21
12 x 1 Litre	1,798 Cartons	19.418
4 x 55 Litres	4,408 Jerry Cans	19.836
1 x 18 Litres	1450 Jerry Cans	23.490
1 x 18 Litres Tin	1,438 Tins	23.290
1 x 20 Litres	1,330 Jerry Cans	23.724
1 x 25 Litres	1,098 Jerry Cans	24.705



Other Specifications of Palm Oil

CRUDE PALM OIL (CPO)		CRUDE PALM KERNEL OIL (CPKO)	
FFA as Palmitic	5% Max	FFA as Lauric	5%
Moisture & Impurities (M&I)	0.5% Max	Moisture & Impurities (M&I) Iodine Value (IV)	0.5 %
REFINED BLEACHED & DEODORISED PALM OIL (RBDPO)		REFINED BLEACHED & DEODORISED PALM KERNEL OIL	
FFA as Palmitic	0.1% Max	FFA as Lauric	0.1% Max
Moisture & Impurities	0.1% Max	Moisture & Impurities (M&I)	0.1% Max
Iodine Value (IV)	50 - 55	Iodine Value (IV)	19 Max
Melting Point	33 - 39 °C	Color (5¼" Lovibond Cell)	1.5 Red Max
Color (5¼" Lovibond)	3 Red Max		
REFINED BLEACHED & DEODORISED PALM OLEIN		PALM KERNEL FATTY ACID DISTILLATE (PKFAD)	
FFA as Palmitic	0.1% Max	FFA as Lauric	50% Min
Moisture & Impurities	0.1% Max	Moisture & Impurities (M&I)	1% Max
Iodine Value (IV)	56 Min	TFM	95% Min
Melting Point	24 °C Max		
Color (5¼" Lovibond)	3 Red Max		
REFINED BLEACHED & DEODORISED PALM STEARIN		PALM KERNEL EXPELLER (PKE)	
FFA as Palmitic	0.2% Max	Profat	21% Min
Moisture & Impurities	0.15% Max	Moisture	12% Max
Iodine Value (IV)	48 Max		
Melting Point	44 °C Min		
Color (5¼" Lovibond)	3 Red Max		
		9 PALM FATTY ACID DISTILLATE (PFAD)	
		FFA as Palmitic	70% Min
		Moisture & Impurities	1% Max
		Saponifiable Matter	95% Min



THEOMNIVOLT "Where Power Meets The Potential"



RBDPALM OIL – CP 10

HS CODE [1513.19.90]



RBD Palm Olein CP10 is Refined with Saturate Protected formula, which helps to reduce oil absorption during Cooking and Frying. It is Tasteless and Odourless formula, which means when you eat, then you taste the food and not the oil.

Color :
Size Lovibond 5 ¼" 3.0 Red 30 Yellow Max

BIOLOGY, CHEMICAL & PHYSICAL CHARACTERISTIC

Parameter	Size	Limit
Free Fatty Acid	%(Palmitic Acid)	01.01 Max
Moisture & Impurities	% W/W	0.1 Max
Iodine Value	Wijs'	56 Min
Slip Melting Point		24 Max
Cloud Point		24 DC Max
Proxide Value	Meq/Kg	10 Max
Saponification Value		

Physical Properties

- Typical Viscosity at 32 – 35 degree C: 44-50 mPas

Raw material or Ingredient

- RBD Palm Oil, Vitamin A, D & antioxidant may be added

Shelf Life

- 12 Month

The above specification is for Reference. Due to natural variations in oil seed crop, chemical & physical constants cannot guarantee at all times.

Typical Fatty Acid Composition

- C12% 0.3
- C14% 1.0
- C16% 40.0
- C18% 4.0
- C18:1% 44.1
- C18:2% 10.6

Certificate



RBDPALM OIL – CP 8

HS CODE [1513.19.90]



RBD Palm Olein CP8 from Indonesia. We have Various Packaging options for Industrial and Retail customers. We are offering Minimum Price of RBD Palm Olein CP8 for Global Destinations exclusively East and West Africa. Our Ready Stockpile is available for Speedy Shipments of RBD Palm Oil CP8

Color :
Colour (5:14 lovibond cell) 3 Red Max

BIOLOGY, CHEMICAL & PHYSICAL CHARACTERISTIC

Parameter	Value
Refractive Index	1.44 -1.45
Free Fatty Acid (%)	0.10% pct max
Moisture (%)	NEN---EN---ISO 662 max 0,1
Impurities (%)	NEN---EN---ISO 663 Negative
Slip Melting Point	(OC) 220 max
Cloud Point	8
Proxide Value	NEN---EN---ISO 3960 max 1.0

Raw material or Ingredient

- RBD Palm Oil, Vitamin A, D & antioxidant may be added

Shelf Life

- 12 Month

The above specification is for Reference. Due to natural variations in oil seed crop, chemical & physical constants cannot guarantee at all times.



Certificate



IBC Tank



1 Liter



5 Liters



Flexi Bag



18 Liters



18 Liters



20 Liters



25 Liters



Synergistic Ventures



Marine Services



THEOMNIVOLT stands as the premier choice for global marine services, offering expertise in multiple diversified marine services with a team of Captains and Chief Engineers. With unmatched reliability and compliance, we ensure safe, efficient, and timely solutions across every ocean.

Mining Activities



From exploration to full-scale production, THEOMNIVOLT provides end-to-end mining design, planning, financing, and operational excellence. Our team of engineers, and mining specialists guarantees sustainable, profitable, and world-class project execution.

Commodity Trading



In the world of commodity trading, THEOMNIVOLT is your trusted partner for fuel, minerals, and resources across global markets. We combine transparency, speed, and strategic insight to deliver maximum value and secure opportunities for our partners.





THEOMNIVOLT



Diversified Marine Activities



- ➔ Ship Building
- ➔ Chartering
- ➔ Sale & Purchase
- ➔ Ship-to-Ship (STS) Operation
- ➔ Decarbonization Management
- ➔ Technical Management
- ➔ Crew Management
- ➔ Repairs & Maintenance
- ➔ Dry Dock
- ➔ Pre-SIRE Inspection
- ➔ Vessel Audit
- ➔ Tanker Management Self Assessment (TMSA)
- ➔ Agency & Husbandry Service

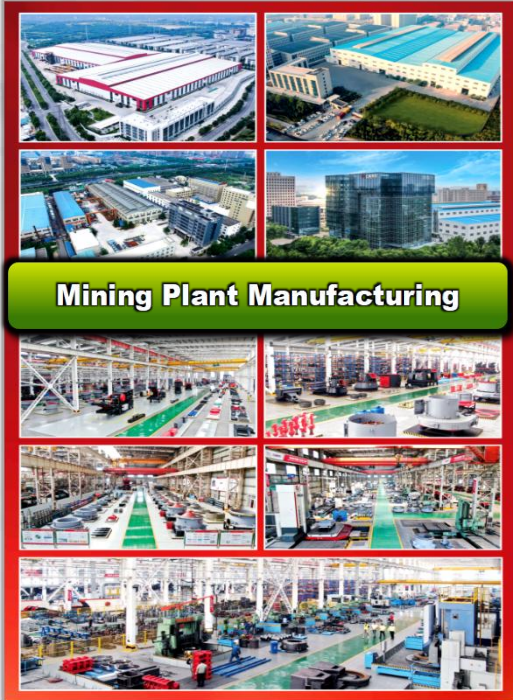


For more details, log on to our website.

www.theomnivolt.biz



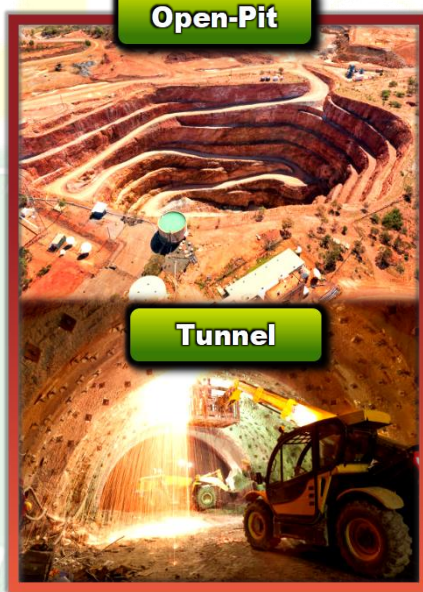
Mining Activities



Mining Plant Manufacturing

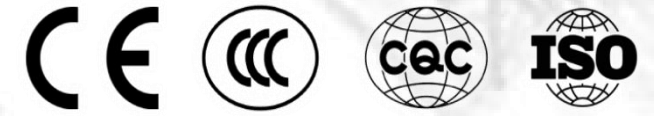


Operational Mining Plants



Open-Pit

Tunnel



We provide **Specialized Technical, Operational, and Financial Solutions**, reinforced by **Authorized Distributorship** from a reputable, **40-Year-Old Mining Plant & Equipment Manufacturer**.

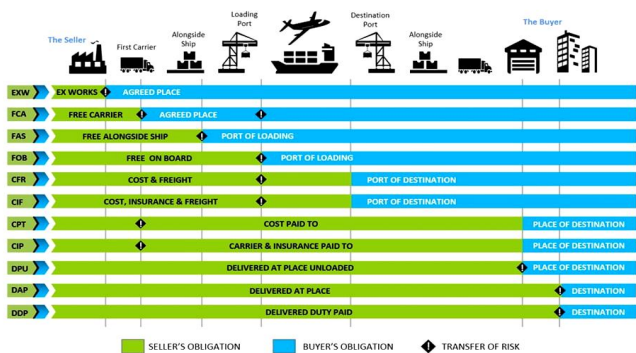


For more details, log on to our website.

www.theomnivolt.biz

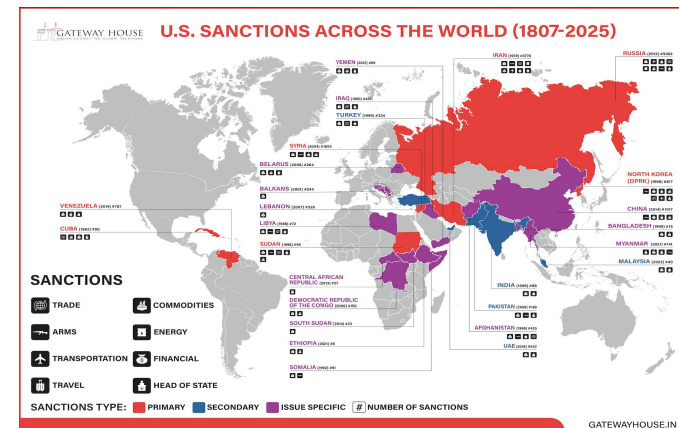


INCOTERMS 2020 Point of Delivery and Transfer of Risk



Based on the current geopolitical landscape and recent policy announcements, the US sanctions framework significantly impacts global commodity sales in 2025:

- The US Treasury's Office of Foreign Assets Control (OFAC) has intensified restrictions on Russia's energy sector, specifically targeting major oil producers and the affiliated maritime logistics networks to suppress commodity revenue streams.
- Compliance risk for commodity traders remains elevated due to the increased scrutiny of the shadow fleet and the potential for secondary sanctions on international actors facilitating the illicit transport of sanctioned crude oil and petroleum products.



GASOIL (EN590)

ULTRA LOW SULFUR
DIESEL (ULSD)

LPG & LNG

BUNKER FUEL

1. Ship-To-Ship (STS)
2. Truck-To-Ship (TTS)
3. Port/Pipe-To-Ship (PTS)

BITUMEN

Penetration / Viscosity Grade

PALM OIL

CP - 10 / 8 / 6

MINERAL ORES

Chromite / Copper / Nickel

Reach Us



Website:

www.theomnivolt.biz

Email:

business@theomnivolt.biz

GUIDELINES

Email Subject:

Mention exact requirement, keep them brief (around 5-9 words), personalize them, incorporate keywords, and urgency (if required)

Email Matter:

Keep it brief and straightforward. Just the most crucial details should be included.

